

## Medisoft Version 14 SP2 Install Instructions

Following are detailed instructions on installing your Medisoft and Office Hours Professional to Service Pack 2. Medical Data Solutions strongly recommends that all Medisoft Version 14 customers install this service pack as soon as possible.

You will need to download the install files to update Medisoft Version 14 to Service Pack 2 from our support link on our web site.

**NOTE – If you do not have high speed Internet, do not attempt to install SP1 via the Internet. The download is very large and will not be feasible with dial up service. If you have dial up service, call Medical Data Solutions for an install CD of SP2. A service fee will apply for all SP2 CD's requested.**

### Update Summary

1. Before starting the Service Pack 2 update, we recommend you backup your Medisoft data.
2. Download service pack update files
3. Un-install your current version of Medisoft and Office Hours Professional (if installed).
4. Install Medisoft
5. Install Office Hours Professional (if purchased)
6. Open Medisoft as usual. Update completed.
7. If you have Focus Reports installed, proceed to page 11 for additional instructions.

**PLEASE note the following. If you have any of the following programs installed you will need additional assistance from Medical Data Solutions to update these programs. These applications must be updated as well, or they will not work properly. The update of these applications will require assistance as the configuration after installation is more complicated.**

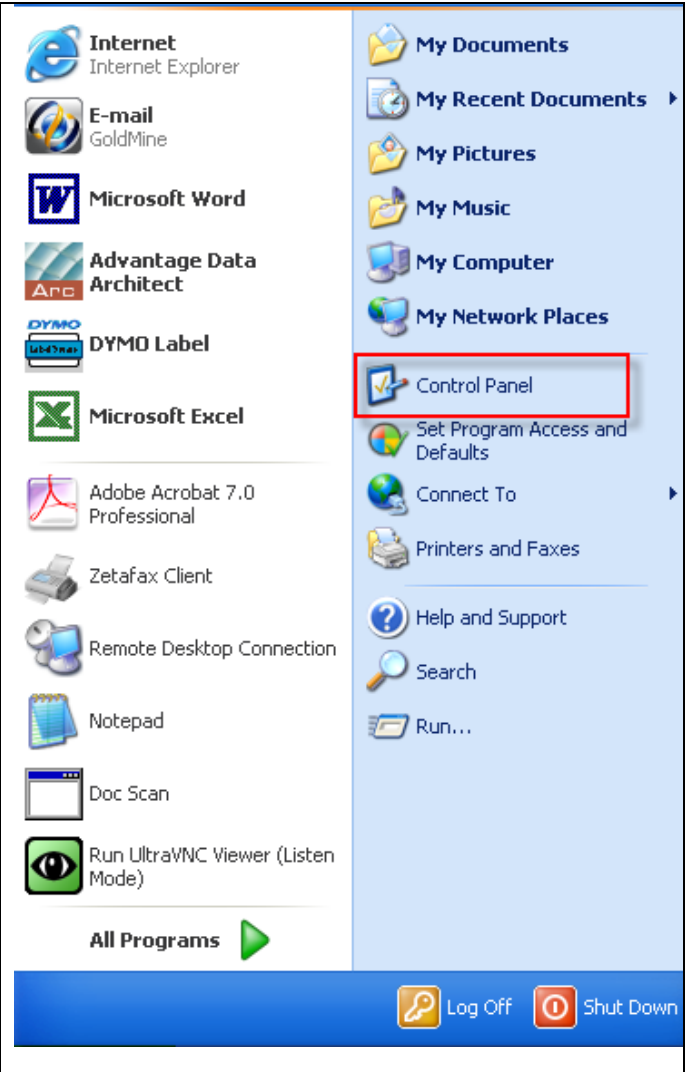
### Medisoft ERA Posting Module Version 14.

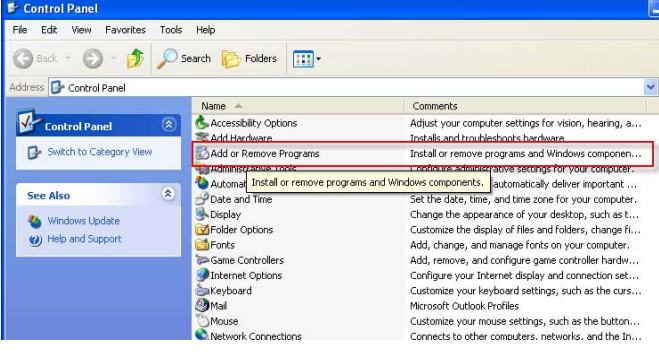
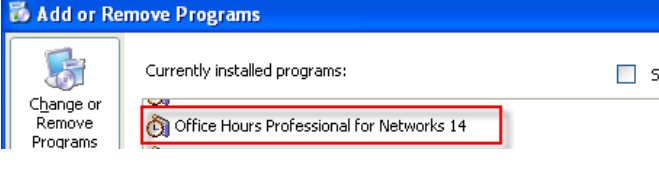
1. Medicare DIRECT claims Module such as TrailBlazer or Availity.


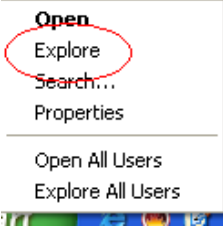
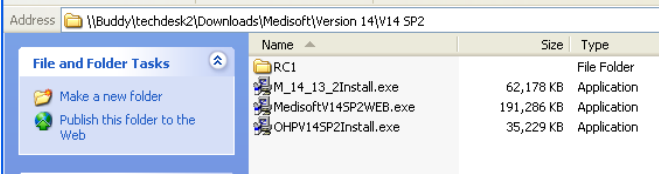
To update Medisoft Version 14 to SP2 using the service pack files we have posted on our web site:

We recommend un-installing your previous version of Medisoft through the Control Panel, Add Or Remove Programs

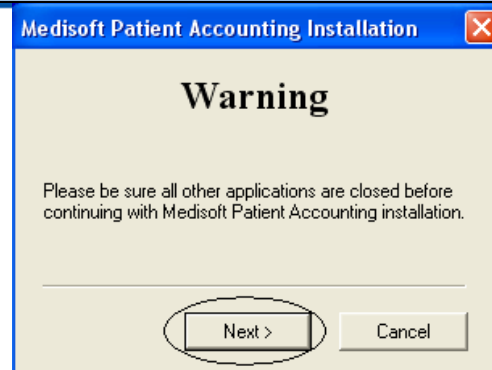
Note that un-installing your Medisoft software does NOT affect your data. The data is stored in another directory by default. If you are not sure where your data is stored, we recommend you backup prior to un-installing.



<p>1e. Click on “Add or Remove Programs”</p>	
<p>1f. Remove Office Hours Pro FIRST, <u>if installed</u>, then Medisoft.</p>	
<p>YOU ARE NOW READY TO INSTALL the Medisoft 14 SP2 Service Pack.</p> <p>You will install in the FOLLOWING order:</p> <p>Medisoft FIRST</p> <p>Office Hours Professional second (if installed)</p> <p>NOTE – Final Draft is now incorporated into the Medisoft install. Final Draft no longer is a separate install.</p> <p>Please note the following: If you have purchased <u>Office Hours Professional</u>, you MUST install Office Hours Professional from the downloaded OHP14SP2Install.exe file. When installing Medisoft, the installation program installs the BASIC version of Office Hours. For the</p>	

<p>Professional Version, you will need to install that from the downloaded file.</p>																
<p><b>1.</b> Browse to the location where you saved the service pack install files.</p> <p>To browse, RIGHT click on the green  button in the lower left hand part of your screen</p> <p>The window on the right will appear. Left double click on “Explore”.</p> <p>Locate where you have saved the install files.</p>																
<p><b>3.</b> To launch, left double click on the Medisoft14SP2WEB.exe file.</p> <p>Remember install Medisoft FIRST, Office Hours SECOND (if purchased)</p>	 <table border="1" data-bbox="1117 1423 1528 1528"> <thead> <tr> <th>Name</th> <th>Size</th> <th>Type</th> </tr> </thead> <tbody> <tr> <td>RC1</td> <td></td> <td>File Folder</td> </tr> <tr> <td>M_14_13_2Install.exe</td> <td>62,178 KB</td> <td>Application</td> </tr> <tr> <td>MedisoftV14SP2WEB.exe</td> <td>191,286 KB</td> <td>Application</td> </tr> <tr> <td>OHPV14SP2Install.exe</td> <td>35,229 KB</td> <td>Application</td> </tr> </tbody> </table>	Name	Size	Type	RC1		File Folder	M_14_13_2Install.exe	62,178 KB	Application	MedisoftV14SP2WEB.exe	191,286 KB	Application	OHPV14SP2Install.exe	35,229 KB	Application
Name	Size	Type														
RC1		File Folder														
M_14_13_2Install.exe	62,178 KB	Application														
MedisoftV14SP2WEB.exe	191,286 KB	Application														
OHPV14SP2Install.exe	35,229 KB	Application														

2. Click on “Next”



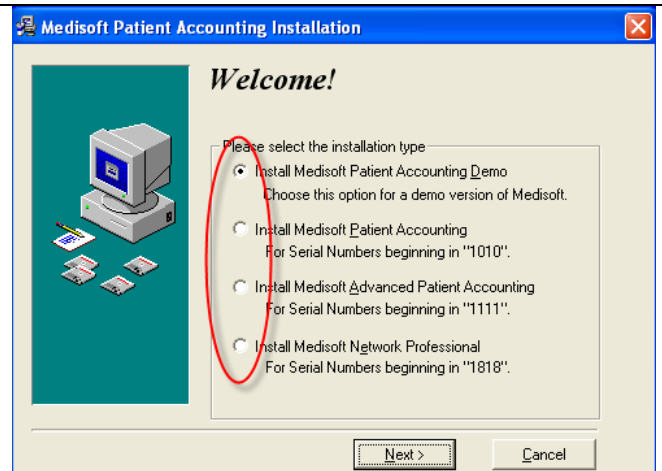
3. “Welcome” splash screen opens. You will need to select the “Installation Type” before proceeding. Your installation “Types” are as follows:

**Medisoft Patient Accounting = 1010**

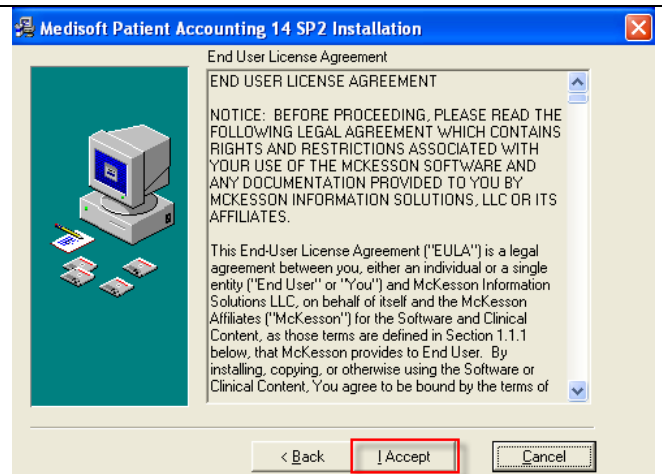
**Medisoft Advance Accounting = 1111**

**Medisoft Network Professional = 1818**

Once you have selected your Installation Type, click on “Next”.



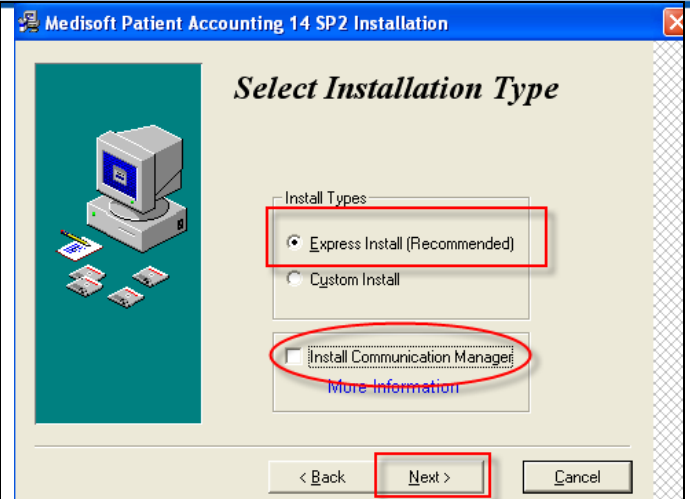
4. You must select “I Accept” when this splash screen appears. If you do not, the install will close and the program will not be installed.



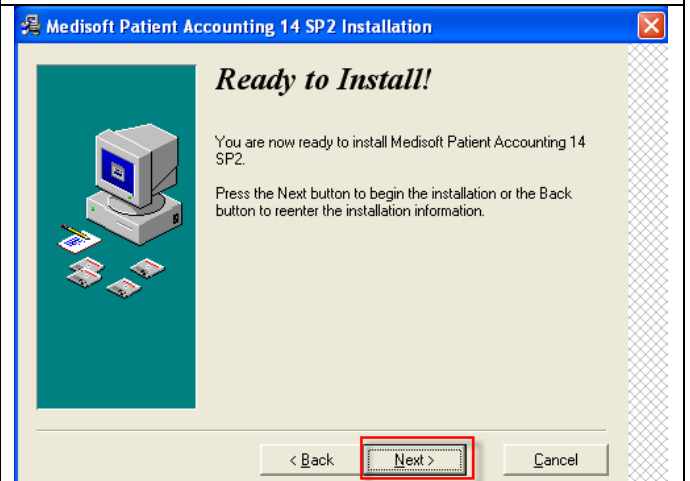
5. We recommend you select “Express Install” option. If you select “Custom Install” you will need to point the installation program to the directory Medisoft Version 14 is installed in.

**Note – By default Medisoft V14 is installed in C:\Program Files\Medisoft.**

**NOTE – Before clicking “Next”, uncheck “Install Communication Manager” This is for users with Medinotes Electronic Medical Records.**



6. “Ready to Install” splash screen is appears. Click on “Next” to proceed and follow the defaults presented.



7. Keep default “Yes” then click Next.

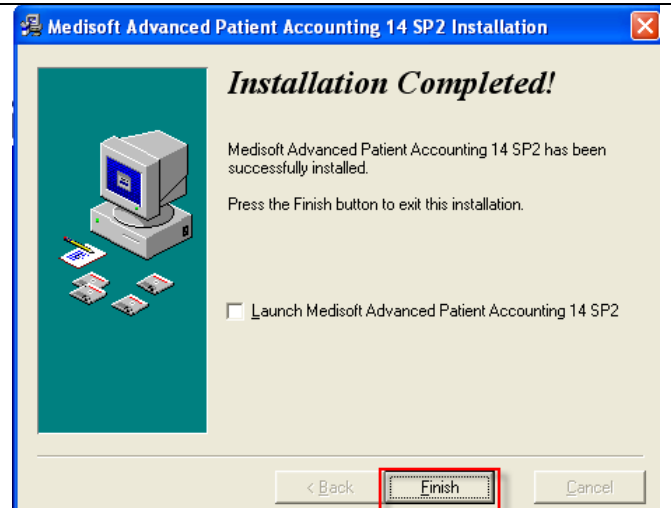


8. Confirm the directory the backup files will be placed, then click on Next.

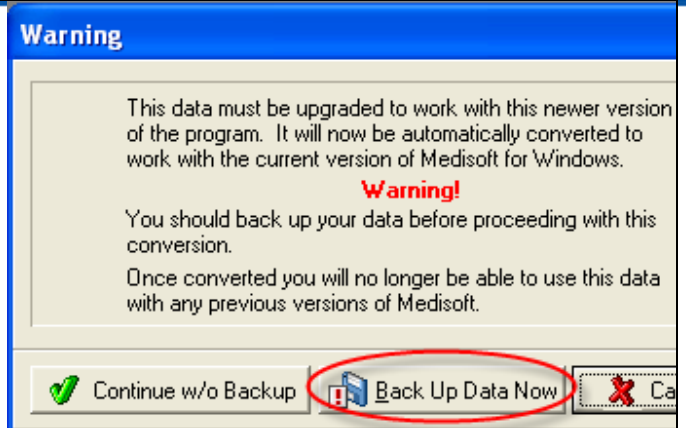


9. Click on “Finish” when the install is completed.

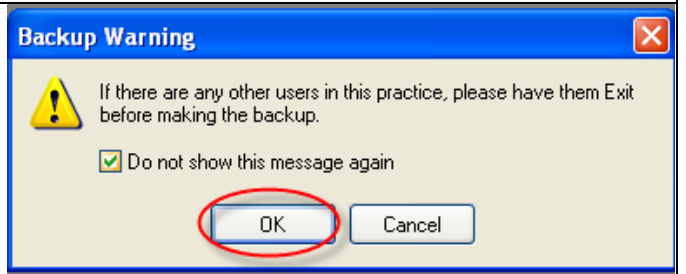
When the install is complete, you can open Medisoft as you normally would. There MAY be a small data update with the install of Service Pack 2.



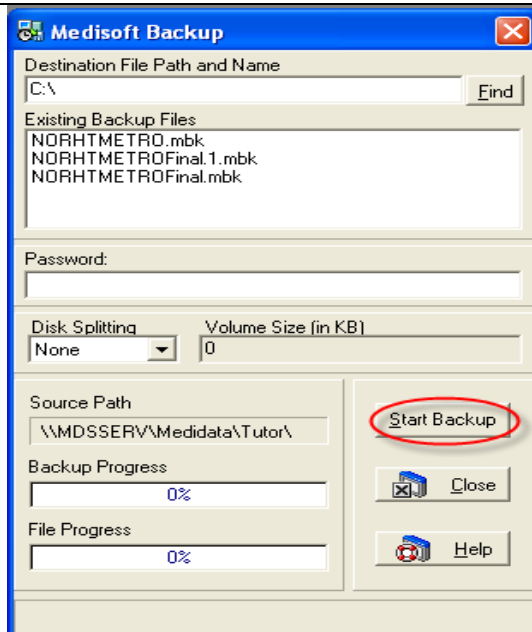
**10.** As noted, there will be a small update the first time you open Medisoft after installing the service pack. If you did not backup your data prior to installing the service pack, backup now by clicking on “Back Up Data Now”.



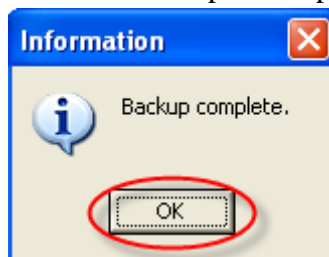
**11.** Click on “OK” to start the back up.



**12.** Select the location you wish to save your backup, then click on “Start Backup”.



Once the backup is complete, click on “OK”

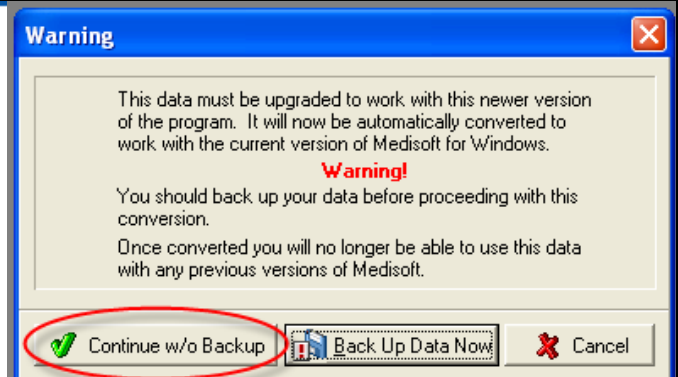




**13.** Now click on “Continue w/o Backup”.

Once the update is complete, you can open your data and start work.

If you have multiple practices, you will need to repeat steps 9-14 for each practice.

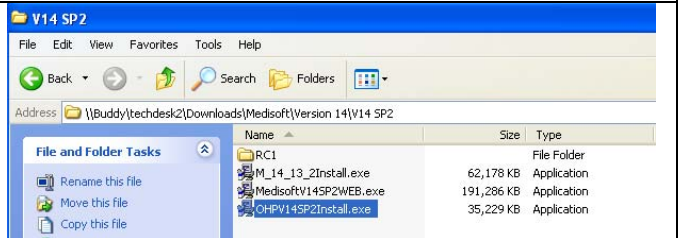


**14.** If you have Office Hours Professional, close Medisoft, browse back to the Medisoft Service Pack downloaded and left double click on the file “OHP14SP2Install.exe”.

Follow the default choices to install.

If you have Office Hours Professional, the install “Types” are as follows:

**Office Hours Pro Single User = 2121**  
**Office Hours Pro Network = 2828**




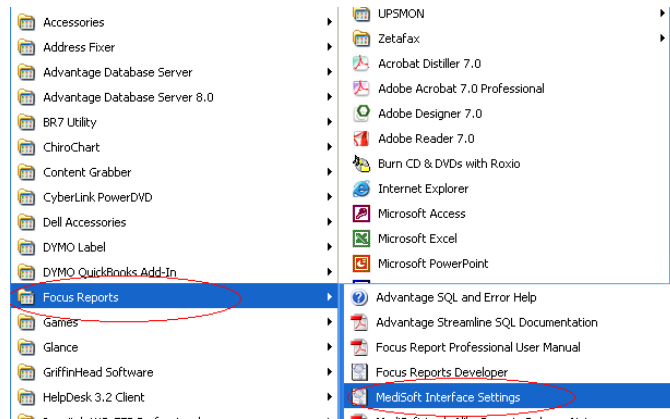
1. If you have Focus Reports installed go to page 14 to update Focus Reports for Medisoft V14 SP1.

**Focus Reports Update**

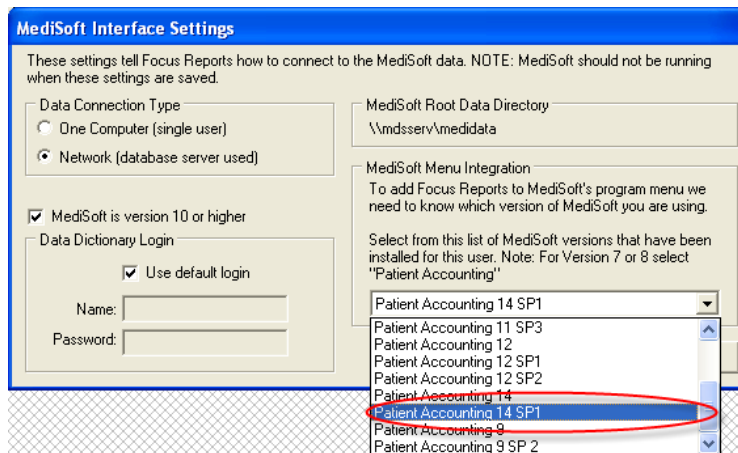
If you have Focus Reports installed, you will need to set up Focus Reports to recognize Version 14 SP2. There is no update in software needed, you will just need to configure Focus Reports for SP2.

1. FIRST, open Medisoft as you normally would. Once open, close Medisoft.

2. Left click on the green  menu in the lower left hand corner of your screen. Choose All Programs and then select Focus Reports, then Medisoft Interface Settings.



1. Click on the down button and select the “Patient Accounting 14 SP2”



2. Click on “Save Settings”. The configuration utility will close when you are done configuring Focus Reports for Version 14 SP2.

**MediSoft Interface Settings**

These settings tell Focus Reports how to connect to the MediSoft data. NOTE: MediSoft should not be running when these settings are saved.

**Data Connection Type**

One Computer (single user)  
 Network (database server used)

MediSoft is version 10 or higher

**Data Dictionary Login**

Use default login

Name:   
Password:

**MediSoft Root Data Directory**

**MediSoft Menu Integration**

To add Focus Reports to MediSoft's program menu we need to know which version of MediSoft you are using.

Select from this list of MediSoft versions that have been installed for this user. Note: For Version 7 or 8 select "Patient Accounting"